



in this issue...

KiwiPlus Enhancements	P1
Quote of the Month	P3
Training Information	P4
R600 Reporting Overview	P5
New Faces @ Radfords	P6
Radfords Applications	P6

UFI Transfers

With many sites now packing UFI product, this is an important area. This functionality provides the ability to those sites that are doing the original submit, to transfer these UFI batches to another site for packing via a transfer. This transfer works very similarly to the normal Coolstore transfer process. Ungraded Transfer can be located in the >PH >TnT Setup and Ungraded menu.

Batch Mode

Rollover Packrun

The rollover packrun function provides an efficient method of cleaning up surplus printed labels in the event of a grower or batch change. Labels for the new packrun line can also be printed at the same time as the surplus labels are deleted.

Pallet Entry

New barcode fonts supplied.

The new Kiwi128 barcode fonts will greatly enhance the output speed of all reports that make heavy use

of barcodes e.g. laser pallet cards and load out notes. To check if your pallet card or load out note printers have the new barcode fonts installed, go to MNT>>System Utilities>>Miscellaneous column. If the "Install Barcode Fonts" button is visible this means the fonts are not installed. Click the button to install the two barcode fonts to the PC. This button will then disappear to show you that they are currently installed on the PC.

Condition Checking

Auto extend expiry date for remaining grower lines

This functionality has been present since the beginning of the season, and was shown at our global seminar in March. To recap, this feature allows the user to process an amend expiry transaction on all grower lines for a multi-grower pallet, while only having to process a single check against a chosen grower line. This can only be done

CONT on page 2



RADFORDS
Radford Software Limited

KiwiPlus 2009 – Enhancements... *cont*

CONT from page 1

on a passed pallet and only grower lines that have not failed a previous condition check will have their expiry date auto extended.

Repalletise

Repal to new brand/marketer

In past seasons, it has not been possible for a repal to occur between two pallets that do not share the same brand and marketer codes. Clients have often had to remove all the fruit from their source pallet via a pallet maintenance DLQ and then alter the pallet header to get the required brand and marketer values. Fruit is then added back to the pallet via a pallet maintenance ILQ. This method works but is not deemed appropriate during the Kiwi Start period due to the effect it has on payments to the packhouse. This season saw the addition of functionality to the repal screen which allows for the movement of fruit between two pallets of differing brand and marketer. This provides a complete solution to the problem. A document outlining steps involved to do this is available by email.

Print Pallet Card on “repal save to existing pallet”

If this system option is switched on, and your computer is connected to a label printer, it will print a laser Pallet Card on save of a repal to an existing pallet. If a printer is not connected, it will queue the label to be printed in the Print PC label screen.

Edit Pallet Headers

Lockdown on crucial material fields to prevent quantity discrepancies.

Mid-way through the season, a decision was made to

prevent critical material attributes from being changed on pallets which had been packed and then repalled. Now, only the following attributes can be changed on these types of pallets: Brand, Pack Category and Label Indicator.

Allocate and pre-allocate to order screens

Hide loaded out orders

It is now possible to hide loaded out/completed orders from any of the order allocation screens. NOTE: This requires the order itself to be set as “loaded out”.

Multi pre-allocate to order

New filters

At Pallet Level we added a dry matter filter, and at Grower Level we added grower, packrun and packrun wildcard filters.

Pallets Matching Order screen

This screen lists all in-store pallets that match a specific delivery request. Various filtering options are available and a pallet list report can be printed. The pallet list will show each pallet’s pack ISO, current location, LOP, dry matter, mnemonic and market and blocked holds. The matching order line will also show against each pallet.

Coolstore Reporting

Classless reports

Available since the start of the season, Coolstore Summary Reports can now be run across all classes. This is simply done by blanking out the class filter field. Clearing the field will open up a size field below where the user must specify the size range to report on. A default size range can be set from the MNT menu.



KiwiPlus 2009 – Enhancements... cont

CONT from page 2

Wharf Returns report

This report keeps a record 'by grower' of all pallets returned from the wharf (where pallets are unloaded from an envelope for the reason that they were returned). The report tracks the date and time of unload along with a comment regarding the reason for the return (entered at time of unload).

Loss Qty Summary report

Extra sort order

Help

F1 context sensitivity

The KiwiPlus Help System provides comprehensive assistance on most sections in KiwiPlus. It continues to be developed in terms of adding new content. In most cases pushing F1 should display direct help for the current screen that is open. Try this next time you are in need of assistance with any particular part of KiwiPlus and if you experience any problems with getting help topics to show, we would like to know. ☺.

Pallet Locations

Warm/Cold Locations

Coolstore rooms can now be set as a "warm" room. Pallets located to these rooms will show the date and time they were located to the warm room and how long they have been there. This information can be viewed in pallet enquiry.

ZIL Messaging

EAN data file size limit - Zespri error if file too big.

This season we have had a number of support calls from clients because their EAN message was apparently too large. Zespri's system cannot handle messages larger than 100,000 lines so the only fix is for us to manually split the message into multiple messages and insert it back into your system.

This is a fairly lengthy process; we would just like to remind all clients to please send your EAN data files regularly to prevent this from occurring.

Updating submit date on transactions / reporting

As a new addition this season, whenever an inventory response is processed, the transactions involved in the inventory message are stamped with the date on which they were submitted (Date the inventory message was sent). With the reporting around this to arrive shortly, a valuable tool is now at your disposal when needing to query exact submit times for Kiwi Start product.



Quote of the Month

*"I do not fear computers.
I fear the lack of them."*

Isaac Asimov

Training @ Radfords

The KiwiPlus training courses, run at the beginning of the season by our Kiwi Support Team of Lee Marshall and Tamsin Oliver, were a great success and we are happy to re-run them whenever requested.

We have three standard courses:



Beginners Module

Specifically aimed at new users, this module touches on most areas of KiwiPlus, introducing the user to all day-to-day functions. We utilize facilities at the Bay of Plenty Polytechnic to enable all attendees to get on-keyboard exposure. Morning and afternoon teas are provided and it usually runs from 9.00am to 3.00pm, with a maximum group size of 10. The typical cost is \$150.00 per user and includes the cost of course material.



Setup Packruns & Label Printing Module

An "in - the - packhouse" style training session, usually in small groups of up to 10 people at a packhouse in the Tauranga area. The morning session covers Batch Mode and the afternoon session Online Mode. These sessions are primarily aimed at the new user but will also provide a useful refresher for existing users. Typical cost is \$100.00 per session, per user.



KiwiPlus Refresher Course

This was a new course this year, offering more detail on specific topical seasonal issues than the Global Users Seminar held at the beginning of each season. It provides an ideal opportunity for more experienced users and EDI operators to delve into the KiwiPlus application. This is a flexible course that can be geared around specific areas of query. This is usually a half-day course, costing \$100.00 per user.

We are also able to offer **bespoke training on ANY area of KiwiPlus and its related applications**. These sessions can be geared to suit you, timing and location-wise, at \$125.00 per hour, plus travel costs if relevant.

These could cover.... Bins, PSR, Grower Reporting etc.

Our training booklets, supplied as part of the cost of the above training courses, are also available to purchase at the following prices:

Beginners Training Module:	\$45.00 + GST
Batch Mode Label Printing:	\$25.00 + GST
Online Mode Label Printing:	\$28.50 + GST

R600 Reporting Overview

Key Features of the R600 Reporting Module:

Multi-site / Multi-Season comparison with Variety Type filter (GK/HW)

R600 Reports module allows you to easily compare multiple sites & season data with visual results (graph) which are all exportable to PDF & excel formats.

Multiple Data filters

Multiple data filters allow you to view/report and filter data to be able to report almost anything.

Chart Date zoom (day/week/month)

Where applicable, the charts have a option to zoom in to a date range.

Defect charting with grouping options

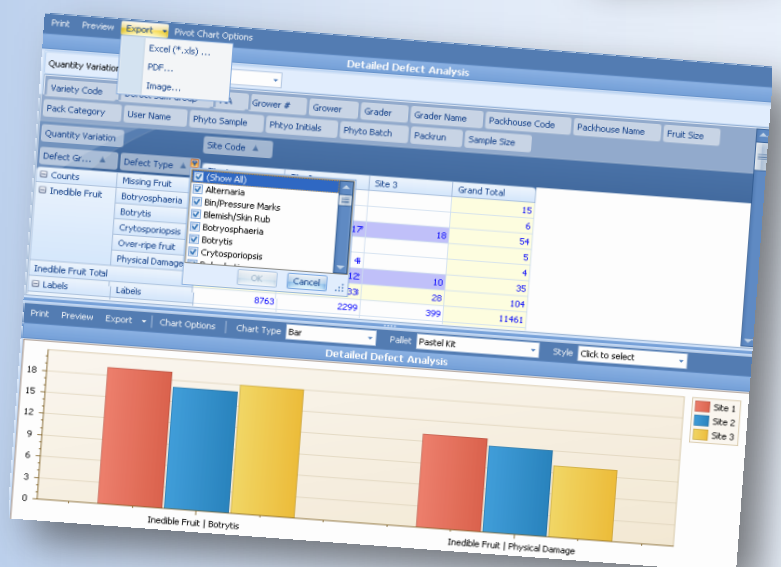
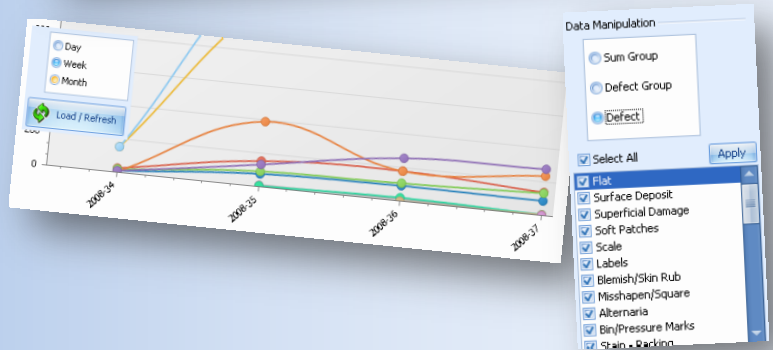
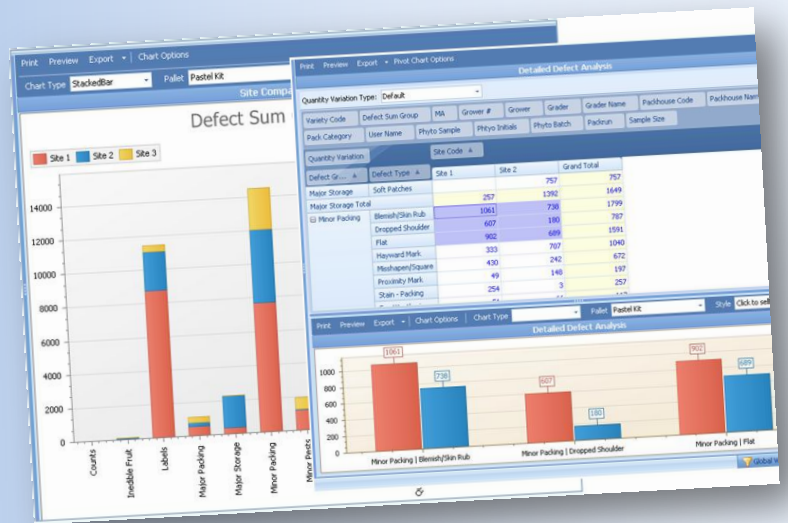
Group the defects/pests into the groups allows you to get an overview as well as drill down into the defects/pests themselves & filter for just what you want.

Advanced charting options & customization

Customize your charts to make them suit your presentation or export it to PDF & email it

Advanced Customizable Pivot grid with filters & charting

Using the pivot grid you can analyze your R600 data collected through the season, or as its happening, and graph your data without having to touch Excel (of course you can always export the pivot grid data to Excel if you wish to further analyse or compare with external data).





Kirk Newson – Network Administrator

Kirk joined us at the beginning of 2009, taking responsibility for the upgrade and ongoing maintenance of our local area network and the various network services that we offer clients. He has made great strides already and we now have brand-new servers in place, running the latest business environment. Kirk comes from a systems engineering background, is a Microsoft Certified System Administrator and has a National Diploma in Computer Engineering. Kirk is also a VB .Net developer and although this won't be his main role, he will be involved in software development from time to time.

Craig Williams – Senior Developer

Craig has just joined us recently, having relocated from Auckland in May. With nine years experience in development and five years in management of payroll applications, Craig will be looking after the future development and support of our KiwiPlus Payments application. As a Visual FoxPro developer, Craig will also be involved in other areas of KiwiPlus, working closely with Ian Vercoe. Craig is delighted with his change of location and is quickly finding his feet in the kiwifruit industry.



Applications @ Radfords – A Summary

KiwiPlus

Core seasonal application with modules covering: packhouse operations, coolstore management, track & trace labeling, ungraded fruit, auto replication of data between sites, electronic data interface, radio frequency data transmission etc.

KiwiPlus International

Multi-language, seasonal application for Europe & Asia

KiwiPlus Payments

Seasonal grower payments application

KiwiPlus Bins Module

3 variants for bin management

KiwiPlus R600 + Reporting Module

QC application for analysis & applying market holds

SCM

Orders management for registered kiwifruit suppliers

Caboodle (KOM, EM, DM)

Multi-season database, orchard, entity and diary management

Caboodle extras (HM, PM, VM)

Harvest Manager, Pest Monitoring, Vine Monitoring

AvosPlus

Management of seasonal packhouse & coolstore inventory

AvosPlus Payments

Seasonal grower payments application linked to AvosPlus

Team Avo

Customized inventory and grower payments application for Team Horticulture

Spray Diary (Web)

Web-based diary for Avocado Industry Council

Apples 2000

Seasonal coolstore application

Apples Master Data

Multi-season database

PackhousePlus (Kumara, Onions...)

Seasonal packhouse & coolstore inventory management

Wharf Logistics

Control of trucking, wharfage & stevedoring

Trucking Logistics

Planning & control of trucking service

Plus various other single user applications